



Every year, B.A.R.N. hosts a career fair and invites local adults, high school, and college students to explore career opportunities in Agriculture, Food Science, Environment and Conservation, and related industries.



B.A.R.N.'s annual Farm Tour is held every October to promote Berks County's agricultural and agribusinesses. Each year's tour highlights a different region of the county and showcases a variety of farms and agricultural and related businesses. **The Farm Tour continues the tradition of educating the public about Berks County's agriculture.**



Bountiful Berks™ is a local food branding program open to B.A.R.N. members that features Berks County-grown and processed products.

## JOIN B.A.R.N. TODAY

*Be Part of the Agriculture Team by joining Berks Agricultural Resource Network*

Annual Dues: \_\_\_\_New \_\_\_\_Renewal (Check one)

- \_\_\_\_ \$25 Individual Members
- \_\_\_\_ \$50 Non-Profit/Government Organizations
- \_\_\_\_ \$100 For-Profit Corporate Affiliates

Name: \_\_\_\_\_

Business Name: \_\_\_\_\_

Address: \_\_\_\_\_

City: \_\_\_\_\_

State: \_\_\_\_\_ Zip: \_\_\_\_\_

Email: \_\_\_\_\_

Website: \_\_\_\_\_

Phone 1: \_\_\_\_\_ Type: \_\_\_\_\_

Phone 2: \_\_\_\_\_ Type: \_\_\_\_\_

**Please Mail Form and Check Payable to:**

***Berks Agricultural Resource Network***  
**c/o Berks County Dept. of Agriculture**  
**1238 County Welfare Road, Suite 260**  
**Leesport, PA 19533**

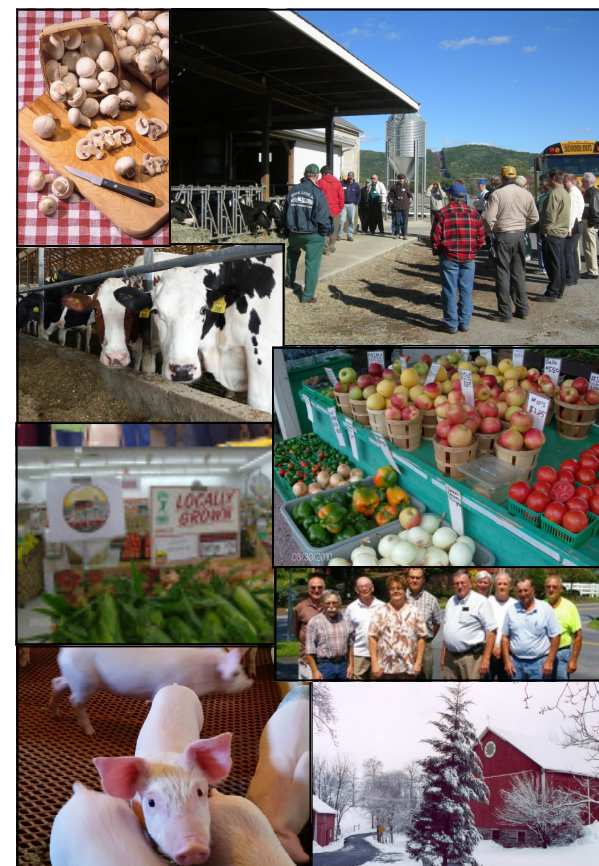
**For more information: call 610-378-1844,**  
**visit [www.berksag.net](http://www.berksag.net), or**



**BERKS AGRICULTURAL  
 RESOURCE NETWORK**

*Framework for the Farm & Food Industries*

## Membership Brochure



***Join us as we work to  
 strengthen the Berks'  
 agriculture & food industry.***

**[www.berksag.net](http://www.berksag.net)**

**Berks Agricultural Resource Network, or B.A.R.N., was formed in 2008 as a non-profit organization to serve the Berks County agricultural and related food industries and rural communities. Through its bi-monthly meetings, B.A.R.N. provides opportunities for the exchange of information and marketing opportunities.**

**B.A.R.N. members include:**

**individuals,  
farm families,  
government organizations,  
non-profits,  
farm agencies,  
agribusinesses and  
corporations.**

**Join B.A.R.N. to be a**

**Part of the Agriculture Team!**



**Your membership support allows us to ensure that agriculture and food production is a priority.**

B.A.R.N. meetings are held bi-monthly at the Berks County Ag Center located at 1238 County Welfare Road, Leesport, unless otherwise announced. Meetings are open to the public.



**How Does B.A.R.N. Serve the Agricultural Community?**

**B.A.R.N. members and projects support:**

- Economic Development
- Marketing
- Policy Development
- Education



With its roots in the Farm City Council and other smaller committees, B.A.R.N. combines these forces and energy and uses a teamwork effort to work for the entire food industry.



**B.A.R.N. encourages you to Savor the Bounty of Berks! Shop at a Farmers Market!**

**B.A.R.N.'s Goals**

- **Promote the agricultural and related food industries** through economic development efforts, marketing, policy development, and education, recognizing that agriculture represents the entire food industry chain from farmer to consumer.
- **Serve as an over-arching coordinator** between the agricultural organization and advocacy groups within Berks County, working to improve the economic viability of agriculture.
- **Provide opportunities for the exchange of information through meetings, classes, tours and workshops**, and provide individual technical assistance as appropriate for the purposes of the organization. Optimize outreach efforts through media outlets, sponsor research and studies, and publish resource information regarding Berks County agriculture and related industries.
- **Assist local governments with information** that will help guide their efforts to support and preserve agriculture and its related economic infrastructure in their communities.
- **Recognize successful efforts to identify, protect, and preserve agriculture in Berks County.** Work with agricultural organizations, local, state and national government officials to develop policies that promote agriculture and related industries.
- **Encourage and support the development of regional networks**, working with existing organizations that share an interest in the past, present and future viability of Berks County's agricultural community.
- **Facilitate the sharing of information** about farming, its history, and its future through newsletters and other communication methods.